



KENYA ELECTRICITY TRANSMISSION CO.

Kawi Complex, Block B,
Popo Lane, Off Red Cross Road, South C
P. O. Box 34942 – 00100, NAIROBI
Phone: 020 4956000, 0719018000, 0732128000
Web: www.ketraco.co.ke • email: info@ketraco.co.ke

Our Ref: KETRACO/PT/030/2024

30th September 2024

Notice to all Bidders

RE: TENDER ADDENDUM AND CLARIFICATION 1

RE: TENDER FOR PROVISION OF LOW LOADER TRANSPORTATION SERVICES FOR A 23MVA TRANSFORMER FROM AWENDO 132/33KV SUBSTATION IN MIGORI TO KITALE 132/33KV SUBSTATION IN KITALE.; TENDER NUMBER KETRACO-PT-030-2024

The following amendments are made to the specified provisions for Tender For Provision of Low Loader Transportation Services For A 23MVA Transformer From Awendo 132/33kv Substation In Migori To Kitale 132/33kv Substation In Kitale.; Tender Number KETRACO-PT-029-2024

Find herein the ADDENDUM and CLARIFICATION No. 1, consisting of FIVE (5) pages into the Principal Tender Documents as attached. This document should be returned along with duly filled Form of Tender.

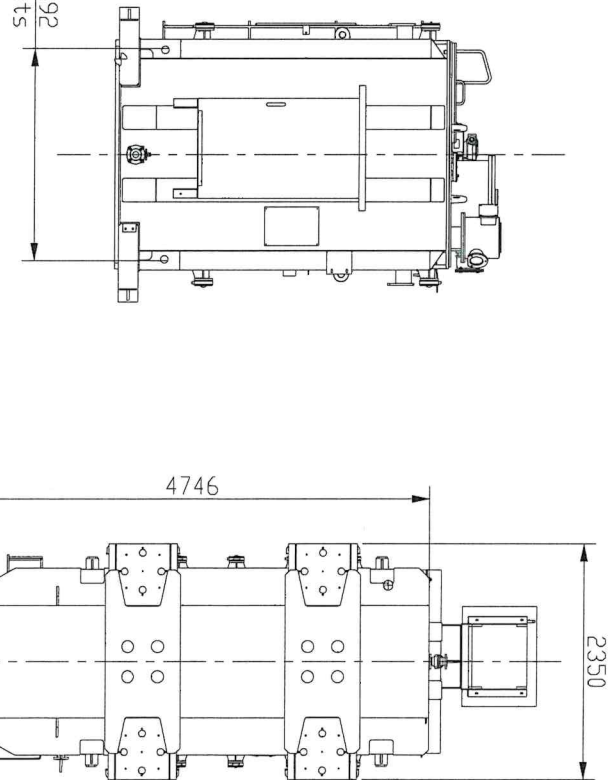
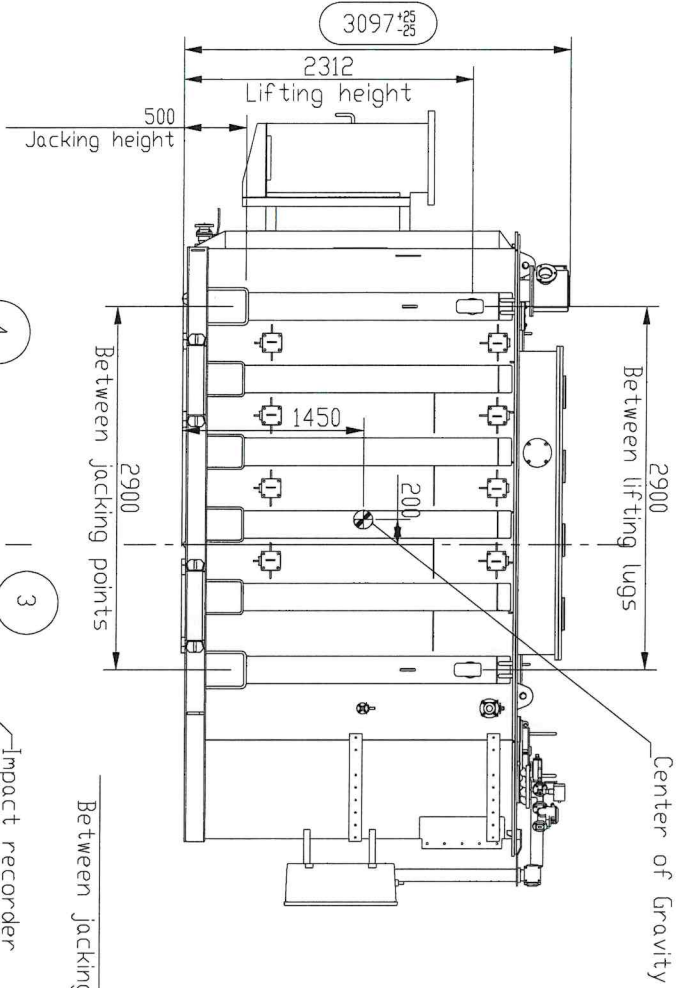
The tender closing date is 8th October 2024 at 10.30 AM EAT.

HESBON KISERO
Ag. SENIOR MANAGER, SUPPLY CHAIN

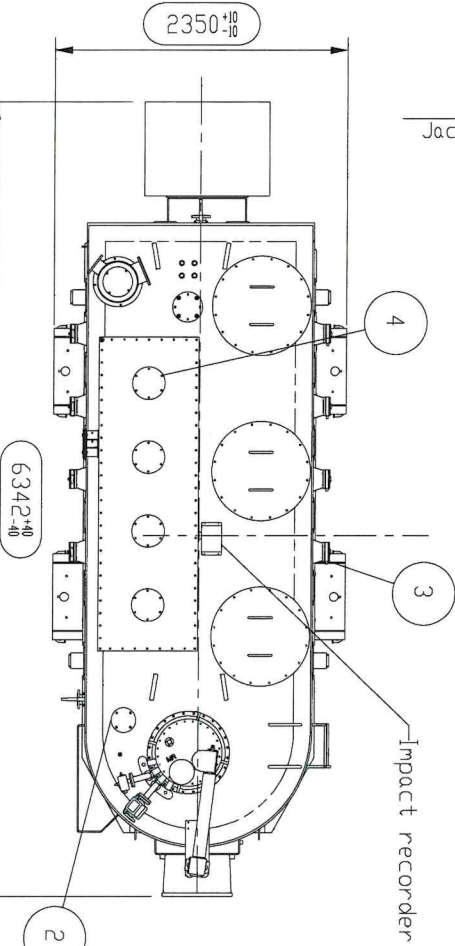
TENDER FOR PROVISION OF LOW LOADER TRANSPORTATION SERVICES FOR A 23MVA TRANSFORMER FROM AWENDO 132/33KV SUBSTATION IN MIGORI TO KITALE 132/33KV SUBSTATION IN KITALE.; TENDER NUMBER KETRACO-PT-030-2024

No	Bidder's Clarifications	KETRACOs Response
1	Am writing to request more information and requirements for the same. Any help will be greatly appreciated.	The bidder has not specified what more information or requirements are being sought. However, the specifications are provided in the bid document that can be accessed for free via a link provided in the website.
2	We kindly request that you furnish us with photos and dimensions of the 23MVA transformer that is to be moved from Awendo 132/33kV substation to Kitale for purposes of giving accurate quotation.	Please find attached the relevant drawings for the Awendo transformer to be transported. Note: The client will dismantle and transport all the transformer accessories including extra oil

We reserve all rights in this document and in the information contained therein. Reproduction, use or disclosure to third parties without express authority is strictly forbidden.



Transport with DI: 42500 kgs
 Transport with out DI: 31000 kgs
 Nitrogen filled up to 0.2 Bar (20kPa)
 Moisture content 30 ppm



TRANSPORT DIRECTION

CENTRE OF GRAVITY

Rev Ind	Revision	Date
4	PNH	Mar 27, 13
3	PNH	Mar 18, 13
2	PNH	Feb 20, 13
1	PNH	Feb 05, 13
0	PNH	Dec 10, 12

Item	Quantity	Unit	Part ID	Dimension	Material ID	Description	Mass	Ren
5	1					IECI/TANK TYPE=IE2P		
4	4		XYN25400-K-PLC			Durtime overall dimensi	6925602	
3	16		12VN 254 000-L			L.V. BUS BLIND FL	2.5	
2	1		12VN 254 000-K			Blind flange radiator	1	
1	3		XYN30900-HER			Blind Flange DN80	0.3	
						Blind cover welded	47.4	

Transport

Prepared	Responsible department	Order	Scale
PNH	Take over department	VN748~749	0.025
Approved	Mass	Page	Language
PNH	42500 kg	1	EN
Revision	Client Drawing No	Drawing No	Cont.
PNH	XPFR610.957-CEA-AWE	XYN460503-K-PLC	1

Production engineering review
 Inspection engineering review
 Design engineering review



CENTRE OF GRAVITY

Rev Ind	Revision	Date
4	PNH	Mar 27, 13
3	PNH	Mar 18, 13
2	PNH	Feb 20, 13
1	PNH	Feb 05, 13
0	PNH	Dec 10, 12

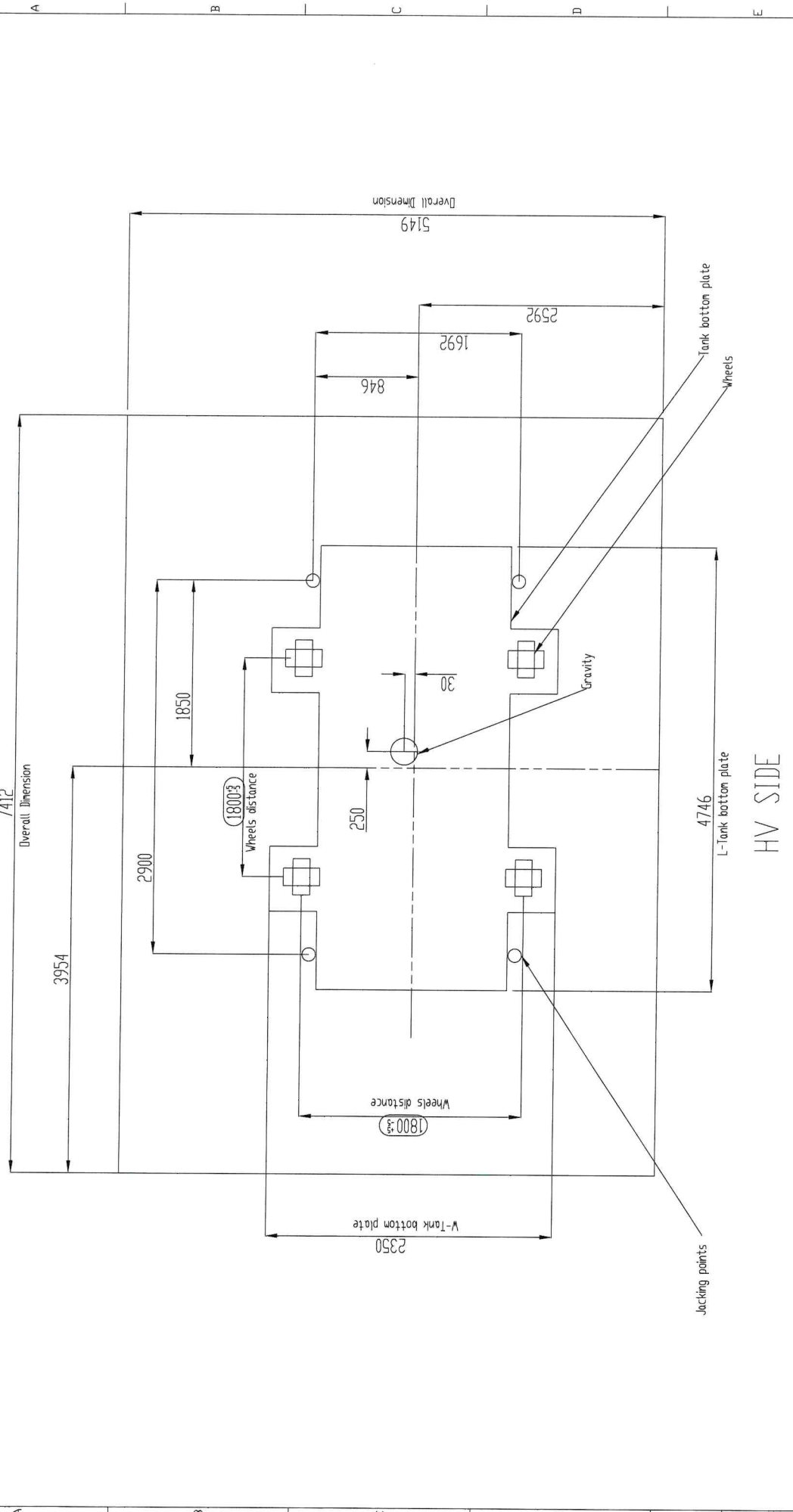
Item	Quantity	Unit	Part ID	Dimension	Material ID	Description	Mass	Ren
5	1					IECI/TANK TYPE=IE2P		
4	4		XYN25400-K-PLC			Durtime overall dimensi	6925602	
3	16		12VN 254 000-L			L.V. BUS BLIND FL	2.5	
2	1		12VN 254 000-K			Blind flange radiator	1	
1	3		XYN30900-HER			Blind Flange DN80	0.3	
						Blind cover welded	47.4	

Transport

Prepared	Responsible department	Order	Scale
PNH	Take over department	VN748~749	0.025
Approved	Mass	Page	Language
PNH	42500 kg	1	EN
Revision	Client Drawing No	Drawing No	Cont.
PNH	XPFR610.957-CEA-AWE	XYN460503-K-PLC	1

Inspection engineering review
 Design engineering review
 Production engineering review

We reserve all rights in this document and in the information contained therein. Reproduction, use or distribution to third parties without express authority is strictly forbidden.



Transformer Mass 51000 Kgs

Scale	0.050
Title	Transformer Foundation
Rep. No.	Responsible department Design
Based on	Responsible department Design
	Use over department SP1
	Drawn VN748~749
	Drawing No. XPR610.957-CFA-AWE
	Sheet 1
	Total 1

Rev. Ind	Revision	Date	Base
4	PNH	Mar. 27, 13	Prepared
3	PNH	Mar. 18, 13	Approved
2	PNH	Feb. 20, 13	PNH
1	PNH	Feb. 05, 13	Revision
0	PNH	Dec. 10, 12	Approved

PNH	Mar. 27, 13	Prepared	6
PNH	Mar. 18, 13	Approved	7
PNH	Feb. 20, 13	PNH	
PNH	Feb. 05, 13	Revision	
PNH	Dec. 10, 12	Approved	
PNH	Mar. 27, 13	Approved	
PNH	Mar. 18, 13	Approved	
PNH	Feb. 20, 13	PNH	
PNH	Feb. 05, 13	Revision	
PNH	Dec. 10, 12	Approved	

8
7
6
5
4
3
2
1

